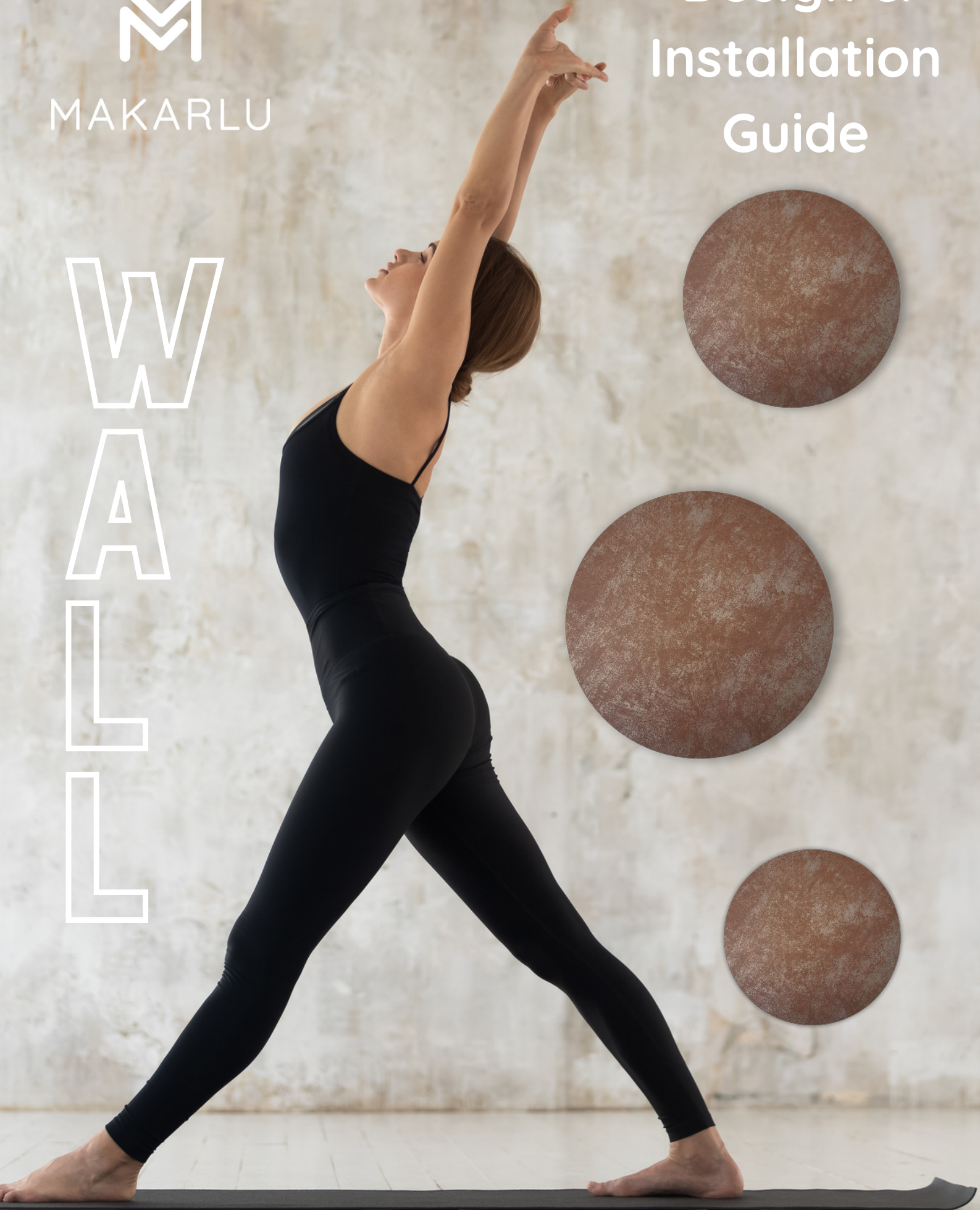




MAKARLU

Design & Installation Guide

W
A
L
L



Inspired by Nature. Designed for Movement



MAKARLU

Inspired by Nature.
Designed for Movement.

Installation Guide

MAKARLU® Wall

General Introduction

Your new MAKARLU Wall panels have arrived! No doubt you'll be keen to install them in the arrangement you've designed. To ensure a trouble-free experience, please ensure you read this guide prior to installing.

MAKARLU Wall panels have been designed to ensure simple, damage-free installation and low maintenance. No tools are required, so you can quickly and easily transform your space and make it your own.

MAKARLU Wall®. Proudly designed and made in Australia using quality materials.

Arrival, Handling & Pre-installation

MAKARLU Wall panels are delivered ready to mount, including all the Command Picture Hanging Strips and isopropyl alcohol cleaning wipes you will need.

The finished surface of your panels is abrasion resistant, however when unpacking take care not to scratch the surface with sharp items such as scissors or box cutters.

The wall surfaces where you install your MAKARLU Wall panels should be clean and relatively free of dust.



MAKARLU

Inspired by Nature.
Designed for Movement.

Dimensions

Hexagon

53cmx39cm
(21"x15.2")

Large Circle

50cm diameter
(19.7")

Medium Circle

40cm diameter
(15.7")

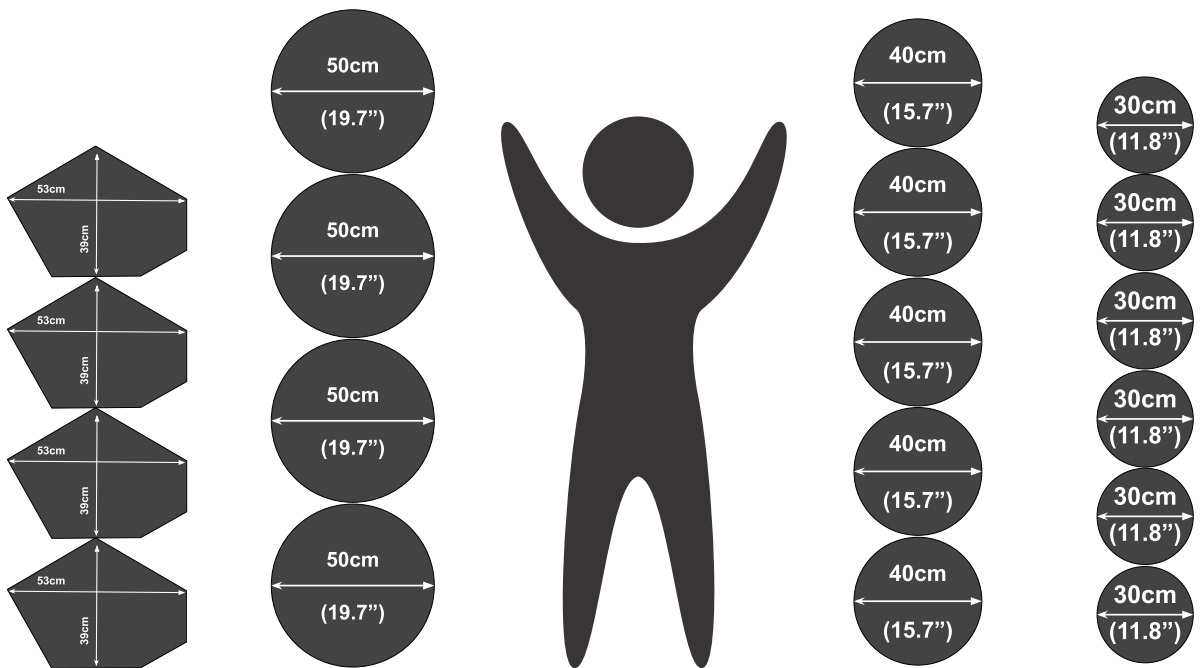
Small Circle

30cm diameter
(11.8")

Dot

11cm diameter
(4.3")

All MAKARLU Wall panels are a slimline 3mm thick (1/8 inch)





MAKARLU

Inspired by Nature.
Designed for Movement.

Circles

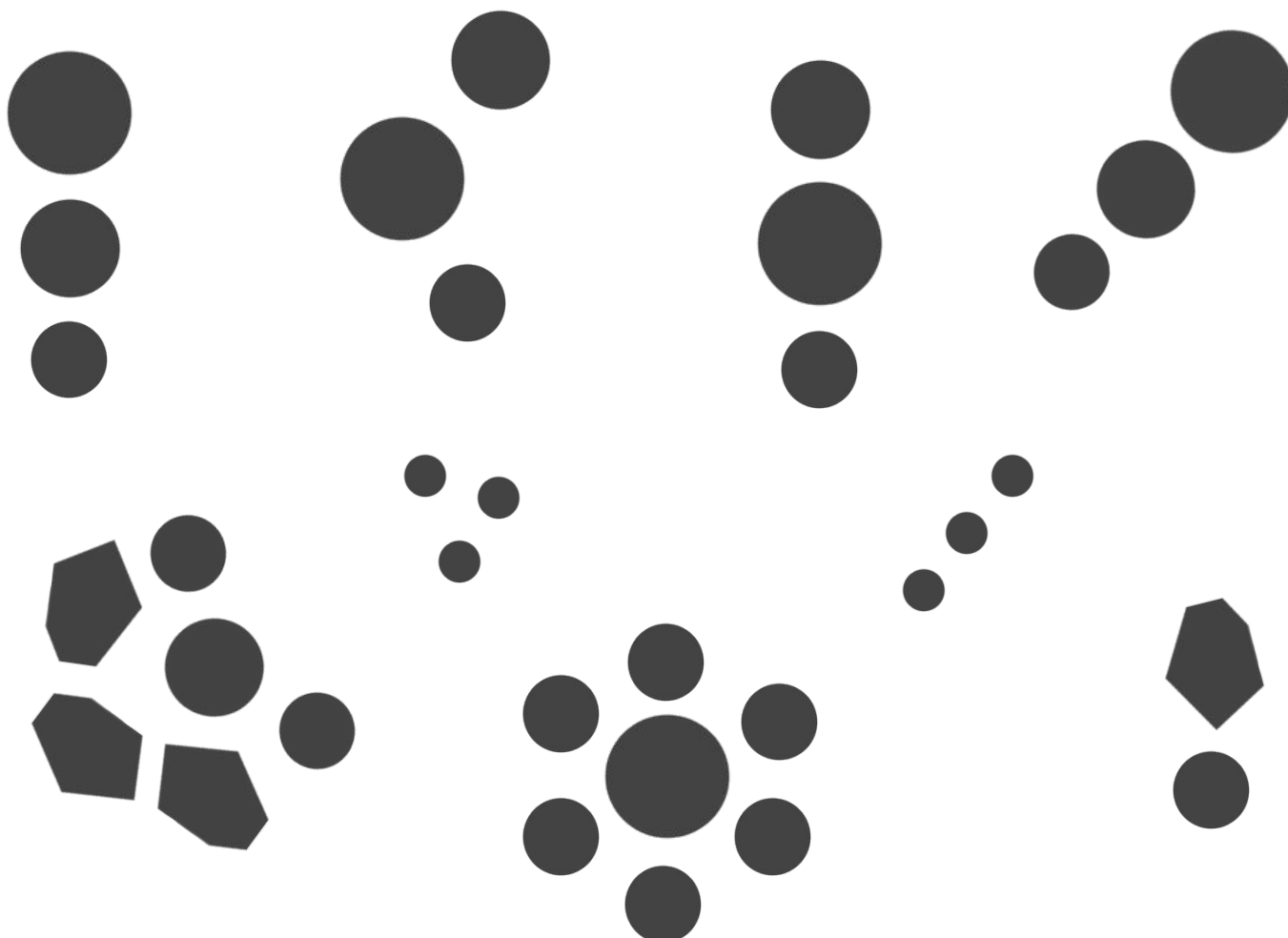
Inspired by the many circles and spheres that occur in nature and our universe, the circles of MAKARLU Wall allow you to create your own unique arrangement. Create your configuration with different sized circles, or even combine the circles with a hexagon or two!

Our smaller circle Dots are ideal for attaching a variety of magnetic hooks, clips and push pins. Hang any lightweight object - straps, bands, reformer springs or even your dog's leash! Also great for hanging memos, notes and cue sheets.

Hint: as a final check of your planned arrangement and panel spacings, first lay them out on the floor to confirm the design that best suits your design.

Below is a small selection of ideas for arrangements with MAKARLU Wall circles. The potential combinations are endless, so use your imagination to create your own special space!

Circle arrangement Ideas





MAKARLU

Inspired by Nature.
Designed for Movement.

Hexagons

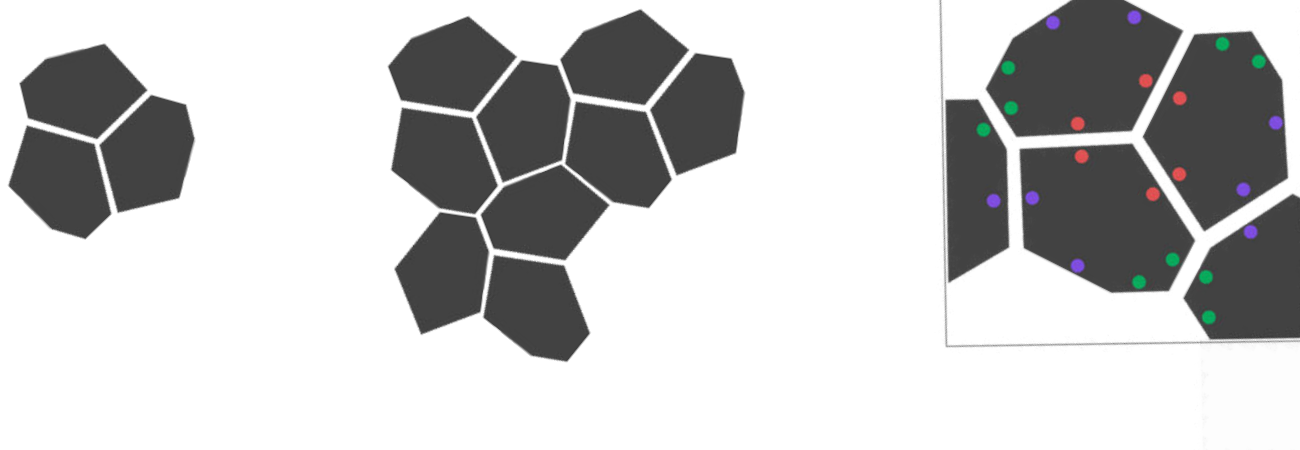
From bee hives to snowflakes, basalt columns, corals and more - hexagons abound in nature. MAKARLU Wall features an irregular hexagonal shape which, although irregularly shaped, allows for perfect tessellation into visually ordered and elegant patterns. Simply rotate each panel to build your desired array.

For your guidance with tessellating arrangements, we've added coloured dots to each panel. When installing ensure that the colours of the dots correspond with the adjacent panel. The coloured stickers are easily removed post-installation. Below is an example of matching the dots.

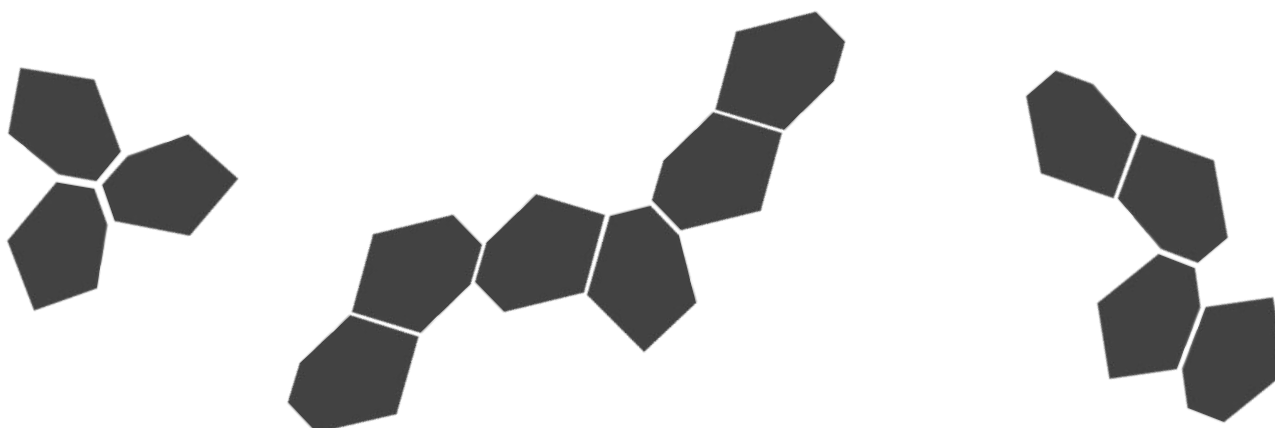
MAKARLU Wall's hexagons can be arranged with your choice of spacing between each panel, from 1cm to 5cm, 10cm or more. Hint: first lay your panels on the floor to find the spacing that best suits your application and aesthetic preference.

Below is a small selection of ideas for tessellation arrangements, or be creative and build your own masterpiece with an irregular array!

Tessellating arrangement Ideas



Irregular arrangement Ideas





MAKARLU

Inspired by Nature.
Designed for Movement.

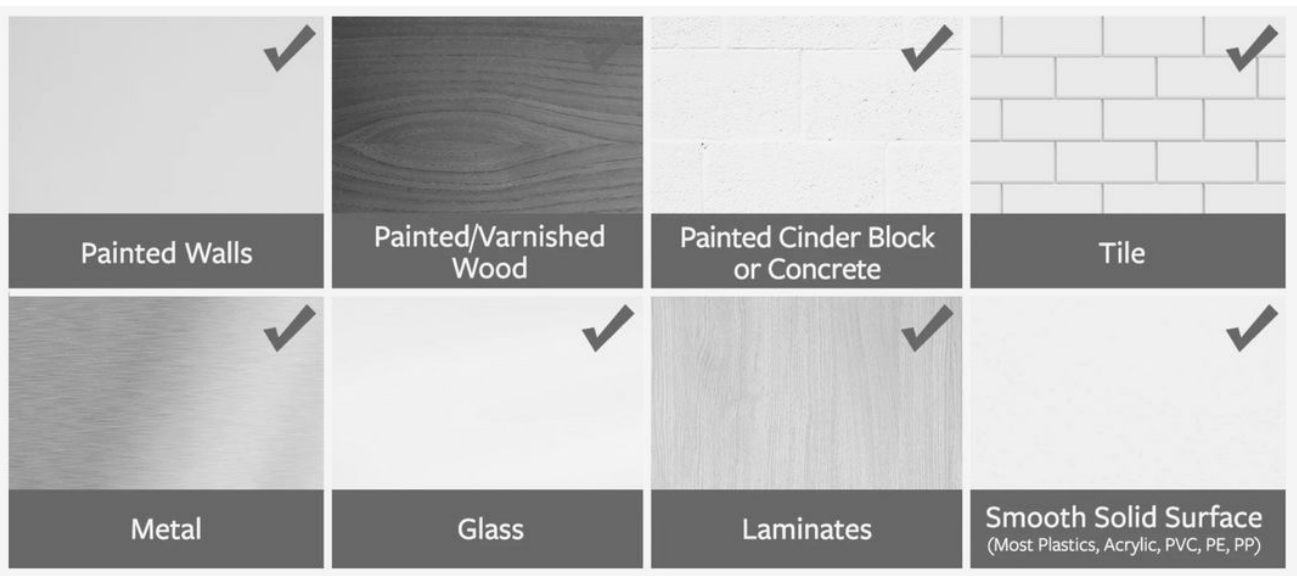
Suitable wall surfaces

Follow the recommendations below from Command and 3M Australia for trouble-free installation.

Damage-free hanging surfaces

To what surfaces will Command Picture Hanging Strips stick?

Painted, stained or varnished wood, glass, tile, metal, painted drywall and other smooth surfaces.



Not approved to hang on

Do not use Command Picture Hangings Strips on textured walls or surfaces, wallpaper, brick, rough or non-stick surfaces, or fabrics.





MAKARLU

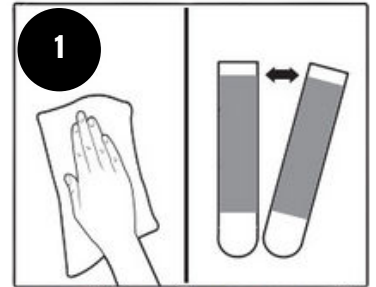
Inspired by Nature.
Designed for Movement.

Easy as 1, 2, 3

MAKARLU Wall is a breeze to install. Simply follow these steps:

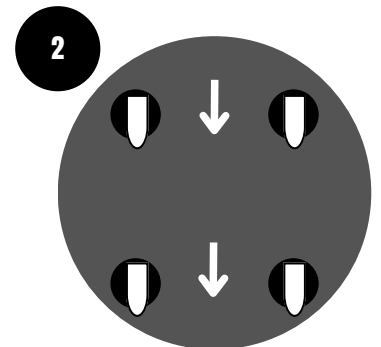
1. Plan and prepare the surface

- For recently painted walls wait 28 days before use.
- Confirm your preferred layout of MAKARLU Wall panels.
- Confirm location and height from floor, adding pencil marks on your wall as required. Use a tape measure and your own body to check desired locations, e.g. shoulder height, glute height.
- Clean your wall with the cleaning wipes provided. Do not use household cleaners or water.
- Separate the Command strips ready for Step 2.



2. Apply Command Picture Hanging Strips

- Click one Command strip to the centre of each locating circle on back of Makarlu Wall panel. Ensure there is a distinctive 'click' as the strip securely locates and locks in place.
- Ensure all the Command release tabs points downwards (important if panels are relocated at a later date - refer next page for removal instructions).
- For one panel at a time, remove backing liners from Command strips.



3. Install

- Press panel firmly to wall for minimum 30 seconds, keeping pressure over the Command strip locations.
- Repeat for subsequent panels.
- Wait 1 hour before using with **MAKARLU Lotus** and **MAKARLU Coast**.





MAKARLU

Inspired by Nature.
Designed for Movement.

Removal

Moving home or studio? Rearranged the furniture or studio equipment? Want to try a new arrangement for your MAKARLU Wall? The good news is that when you are ready to take down or relocate your panels, the Command strips come off cleanly—no nail holes, cracked plaster or sticky residue.

- Grab the edge of a panel with your fingers and gently peel it away from the wall until the strips are released. Do not pull it straight off, this risks damaging your paint, so peel the panel away slowly.
- Hold the tail of each Command release tab and stretch downwards slowly and close to the wall, up to 15 cm (6 inches) until released. Never pull release tabs directly away from wall, this may remove paint.

To reinstall your MAKARLU Wall in its new location you'll need to purchase some more Command Picture Hanging Strips (medium size) at your local supermarket, hardware store or office supplier.

Not straight out



Down, close to wall

